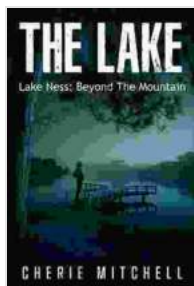


# The Enigmatic Loch Ness: Unveiling the Mysteries Beyond the Mountain

Nestled amid the Scottish Highlands, Loch Ness is a captivating and enigmatic freshwater lake that has captivated the human imagination for centuries. Its vast expanse, shrouded in mist and legend, has given rise to one of the world's most enduring mysteries: the Loch Ness Monster.

This comprehensive article delves into the captivating world of Loch Ness, exploring its rich history, scientific investigations, and the enduring allure of the Loch Ness Monster, affectionately known as "Nessie." Join us as we voyage through the depths of this iconic lake, where myth and science intertwine.



## The Lake: Lake Ness - Beyond The Mountain

by Cherie Mitchell

★★★★☆ 4.2 out of 5

Language : English  
File size : 1189 KB  
Text-to-Speech : Enabled  
Screen Reader : Supported  
Enhanced typesetting : Enabled  
Word Wise : Enabled  
Print length : 218 pages  
Lending : Enabled



**A Historical Tapestry**

**Geological Formation**

Loch Ness owes its origins to the Ice Age, when glaciers carved out its distinctive basin approximately 10,000 years ago. The lake is remarkably deep, with a maximum depth of 754 feet, making it the second-deepest lake in the United Kingdom after Loch Morar.



## **Ancient Legends**

The earliest written account of a Loch Ness monster-like creature dates back to the 6th century, when Saint Columba is said to have encountered a water beast in the river Ness. Over the centuries, numerous sightings and tales of a mysterious creature inhabiting the lake have been passed down through generations.

## **The Birth of a Modern Myth**

In 1933, a photograph purportedly showing a plesiosaur-like creature in Loch Ness appeared in the Daily Mail, igniting global fascination with the

Loch Ness Monster. This image, known as the "Surgeon's Photograph," remains one of the most famous and controversial pieces of evidence in the monster's history.

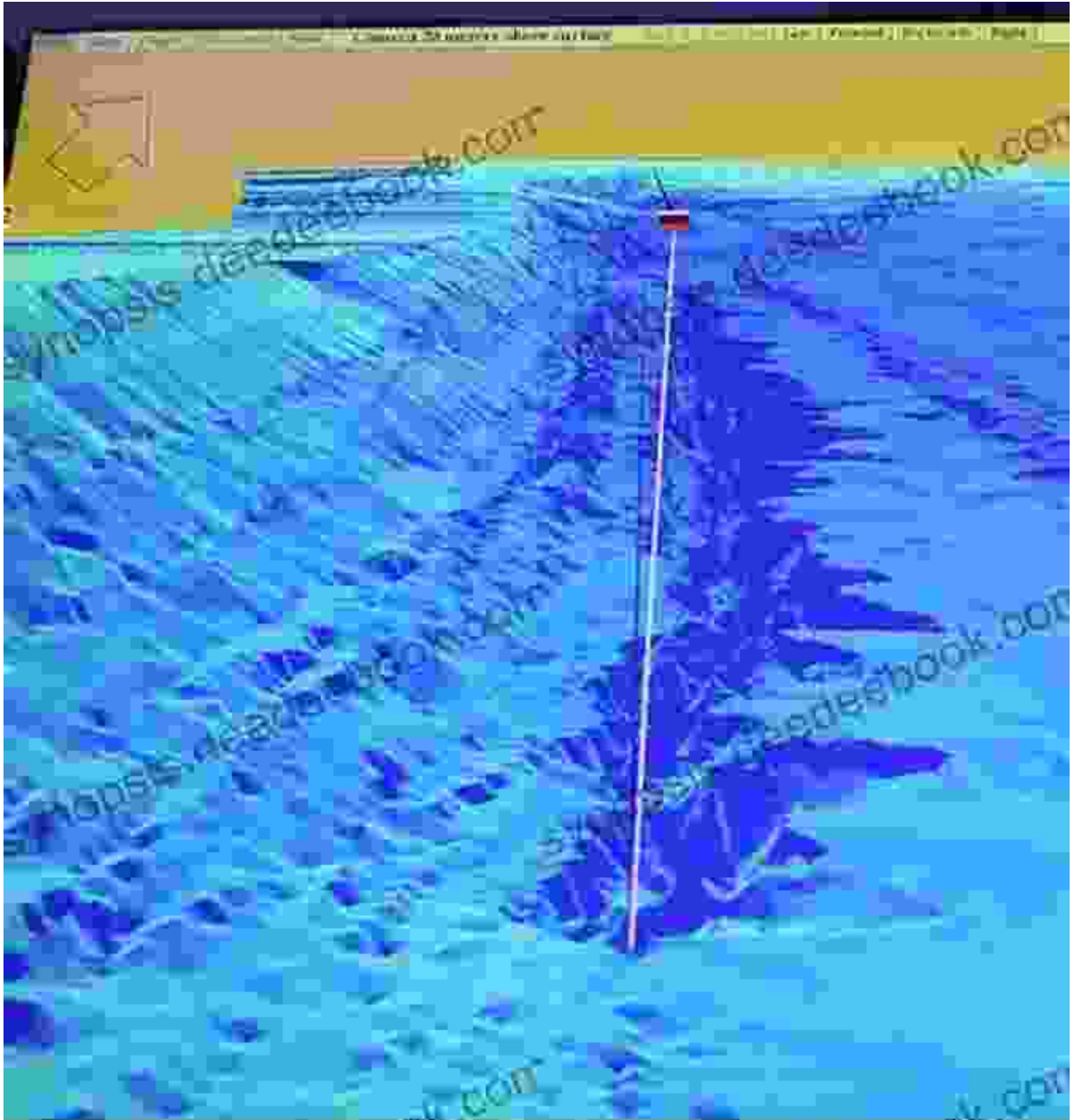
## **Scientific Investigations**

### **Early Expeditions**

In the wake of the Surgeon's Photograph, several expeditions were launched to investigate the possibility of a large creature living in Loch Ness. In 1934, the first scientific sonar expedition was conducted, but no conclusive evidence was found.

### **Operation Deepscan**

In 1969, the most comprehensive scientific investigation to date was undertaken by Operation Deepscan. Utilizing sophisticated sonar equipment, the expedition searched the entire lake for large objects. While some echoes were detected, they could not be definitively linked to a living creature.



Scientific sonar expeditions have played a crucial role in investigating Loch Ness' depths.

### **Possible Explanations**

#### **Natural Phenomena**

Some scientists believe that the Loch Ness Monster sightings can be attributed to natural phenomena, such as:

- **Seiches:** These are standing waves that can create the illusion of a moving object.
- **Optical Illusions:** Mist, wind, and sunlight can combine to distort perceptions.
- **Large Fish:** Sturgeon, eels, and catfish can reach significant sizes and may have been mistaken for monsters.

## **Hoaxes and Misidentifications**

It is also possible that some sightings were deliberate hoaxes or the misidentification of objects such as boats, logs, or seals.

## **The Enduring Enigma**

Despite decades of scientific investigations and numerous expeditions, the existence of the Loch Ness Monster remains an unsolved mystery. The lake's vastness, dark depths, and remote location provide an ideal setting for speculation and intrigue.



## **Cultural Impact**

### **Tourism and Folklore**

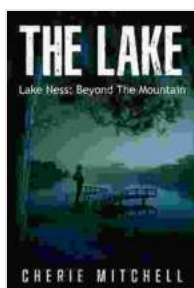
Loch Ness has become a popular tourist destination, with visitors flocking to the area to witness the lake's beauty and perhaps catch a glimpse of Nessie. The monster has also become a popular figure in folklore, inspiring countless books, films, and television shows.

### **Scientific and Cultural Significance**

The Loch Ness Monster mystery has played a significant role in cryptozoology, the study of hidden or unknown animals. The lake's vast ecosystem and the possibility of an undiscovered creature have captivated the imaginations of scientists and enthusiasts alike.

Loch Ness, with its enigmatic depths and enduring mystery, continues to fascinate and inspire people worldwide. While scientific investigations have yet to provide conclusive evidence of a large creature inhabiting the lake, the allure of Nessie remains as strong as ever.

Whether a mythical creature or a product of imagination, the Loch Ness Monster has become an iconic symbol of Scotland and a timeless source of mystery and wonder. As long as the lake's depths remain unexplored, so too will the legend of Nessie continue to captivate future generations.



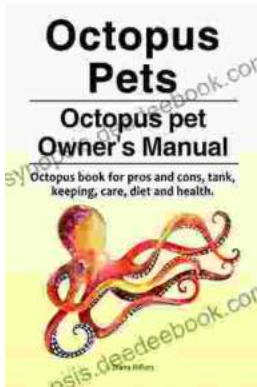
## The Lake: Lake Ness - Beyond The Mountain

by Cherie Mitchell

★★★★☆ 4.2 out of 5

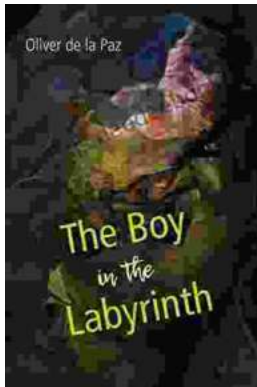
Language : English  
File size : 1189 KB  
Text-to-Speech : Enabled  
Screen Reader : Supported  
Enhanced typesetting : Enabled  
Word Wise : Enabled  
Print length : 218 pages  
Lending : Enabled





## Octopus as Pets: A Comprehensive Guide to Care, Costs, Tank, Health, and Diet

Octopuses are fascinating creatures, with their eight arms, unique intelligence, and ability to change color and texture. But are they suited to...



## Akron, Ohio: A City of Poems

Akron, Ohio is a city with a rich literary history. From the works of Hart Crane to the poems of Etheridge Knight, Akron has been home to some of the most...